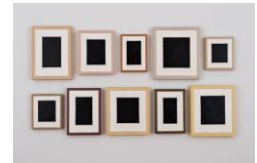




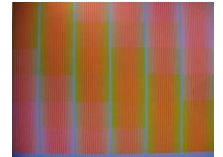
**Post-War and Contemporary Art**  
**Opening Jan. 31, 2015**  
**Installation Checklist**

**Huntington Gallery & Hallway**  
**Post-War Art**

1. Allan McCollum (American, born 1944)  
*Ten Surrogate Paintings*, 1980-81  
Acrylic on wood and museum board  
Dimensions variable  
Wadsworth Atheneum Museum of Art, Gift of Hadassah Brooks-Morgan, 2013.8.1  
**New Acquisition**
2. Andrea Fraser (American, born 1965) \*  
*May I Help You?*, 1991  
Videotape transferred to DVD  
Running time: 20 minutes  
Wadsworth Atheneum Museum of Art, Gift of Andrea Miller-Keller, 1995.6.1
3. Lee Krasner (American, 1908–1984)  
*Broken Gray*, 1955  
Oil and collage on panel  
Wadsworth Atheneum Museum of Art, Gift of Mr. and Mrs. David Gibbs, Roxbury, Connecticut, 1975.88
4. Franz Kline (American, 1910–1962)  
*Painting*, 1952  
Oil on canvas  
65 x 41 3/4 inches  
Wadsworth Atheneum Museum of Art, Gift of Walter K. Gutman, 1959.250
5. Adolph Gottlieb (American, 1903–1974)  
*Under and Over*, 1959  
Oil on canvas  
96 x 48 inches  
Wadsworth Atheneum Museum of Art, Gift of Susan Morse Hilles, 1961.5
6. Robert Motherwell (American, 1915–1991)  
*The Blue Painting Lesson: A Study in Painterly Logic (#1–5)*, 1973  
Acrylic and charcoal on canvas  
Wadsworth Atheneum Museum of Art, The Ella Gallup Sumner and Mary Catlin Sumner Collection Fund, 1995.4.1A-E



7. Willem de Kooning (American, born The Netherlands, 1904–1997) \*  
*Montauk I*, 1969  
 Oil on canvas  
 88 x 77 inches  
 Wadsworth Atheneum Museum of Art, The Ella Gallup Sumner and Mary Catlin Sumner Collection Fund, 1973.46
8. Helen Frakenthaler (American, 1928–2011)  
*Sea Picture with Black*, 1959  
 Oil on canvas  
 84 1/2 x 57 inches  
 Wadsworth Atheneum Museum of Art, Gift of Susan Morse Hilles, 1961.7
9. Richard Anuszkiewicz (American, born 1930)  
*Summer Sunset Reds*, 1982  
 Acrylic on canvas  
 Wadsworth Atheneum Museum of Art, Given in honor of Millard H. Pryor, Jr. by a group of his friends, 1983.47
10. Kenneth Noland (American, 1924–2010)  
*Stack*, 1965  
 Acrylic on canvas  
 60 x 60 inches  
 Wadsworth Atheneum Museum of Art, Gift of Mr. and Mrs. Burton Tremaine, 1979.220
11. Bridget Riley (English, born 1931)  
*Shuttle II*, 1964  
 Emulsion on panel  
 42 1/8 x 42 1/8 inches  
 Wadsworth Atheneum Museum of Art, The Alexander A. Goldfarb Contemporary Art Acquisition Fund and the Ella Gallup Sumner and Mary Catlin Sumner Collection Fund, 1994.5.1
12. Victor Vasarely (French, born Hungary, 1908–1997)  
*Ixion*, 1956  
 34 3/4 x 31 1/2 inches  
 Wadsworth Atheneum Museum of Art, Gift of Susan Morse Hilles, 1992.13
13. Josef Albers (American, born Germany, 1888–1976)  
*Homage to the Square: White Day*, 1961  
 Oil on masonite  
 31 1/2 x 31 1/2 inches  
 Wadsworth Atheneum Museum of Art, Gift of Susan Morse Hilles, 1992.8
14. Josef Albers (American, born Germany, 1888–1976)  
*Homage to the Square: Yellow Echo*, 1957  
 Oil on composition board  
 40 x 40 inches  
 Wadsworth Atheneum Museum of Art, Gift of Susan Morse Hilles, 1962.11
15. Anni Albers (American, born Germany, 1899–1994)  
*In Orbit*, 1957  
 Wool  
 16 3/8 x 23 1/4 inches  
 Wadsworth Atheneum Museum of Art, Bequest of Nina H. Stanley, 1990.58  
**Not exhibited in nearly 20 years**



16. Ellsworth Kelly (American, born 1923) \*

*Red Orange (Maya)*, 1959

Oil on canvas

43 x 19 inches

Wadsworth Atheneum Museum of Art, Gift of Susan Morse Hilles, 1992.11



17. John McLaughlin (American, 1898–1976)

*#17*, 1965

Oil on canvas

48 x 60 inches

Wadsworth Atheneum Museum of Art, Gift of Mr. Herrick Jackson 1976.105



18. John McLaughlin (American, 1898–1976)

*#5*, 1967

Oil on canvas

48 x 60 inches

Wadsworth Atheneum Museum of Art, Gift of Mrs. Roy Wilkerson Hanna, 1968.90

Not exhibited in nearly 30 years



19. Alexander Calder (American, 1898–1976)

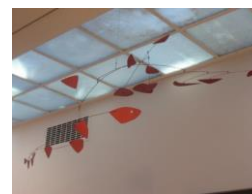
*Sumac No. 11*, 1952

Metal

75 inches long

Wadsworth Atheneum Museum of Art, The Philip L. Goodwin Collection, Gift of James L.

Goodwin, Henry Sage Goodwin, and Richmond L. Brown, 1958.746



20. Paul Feeley (American, 1910–1966)

*Hector*, 1962

Oil on canvas

60 x 48 inches

Wadsworth Atheneum Museum of Art, Gift of Tony Smith, 1967.17



21. Ralph Humphrey (American, 1932-1990)

*Black*, 1958

Oil on canvas

72 x 60 inches

Wadsworth Atheneum Museum of Art, Gift of Tony Smith, 1967.19



22. Theodoros Stamos (American, 1922–1997)

*Untitled*, 1958

Oil on canvas

58 1/4 x 46 inches

Wadsworth Atheneum Museum of Art, Gift of Tony Smith, 1967.20

Never shown before



23. Tony Smith (American, 1912–1980)

*New Piece*, 1966

Wood with lacquer

10 3/8 x 21 x 23 inches

Wadsworth Atheneum Museum of Art, Gift of The Robert Mapplethorpe Foundation, Inc.,

2014.11.1

New Acquisition – never shown before



24. Barnett Newman (American, 1905–1970)

*Onement II*, 1948

Oil on canvas

60 x 35 inches

Wadsworth Atheneum Museum of Art, Gift of Tony Smith, 1967.14



25. Tony Smith (American, 1912–1980)

*Spitball*, 1961

Marble

12 1/2 x 14 3/8 x 14 1/4 inches

Wadsworth Atheneum Museum of Art, Gift of the Estate of Marcus Bassevitch, 1993.82



26. Tony Smith (American, 1912–1980)

*Amaryllis*, 1965

Painted steel

Wadsworth Atheneum Museum of Art, Purchased by exchange and with funds contributed by Joseph L. Shulman, 1967.2



27. Jackson Pollock (American, 1912–1956)

*Number 9*, 1949

Oil on canvas

44 1/4 x 34 inches

Gift of Tony Smith, 1967.15



28. Clyfford E. Still (American, 1904–1980)

*Number 5*, 1951

Oil on canvas

54 5/16 x 45 5/16 inches

Wadsworth Atheneum Museum of Art, Gift of Tony Smith, 1967.18



29. Mark Rothko (American, born Latvia, 1903–1970)

*Untitled*, 1949

Oil on canvas

35 1/2 x 54 1/2 inches

Wadsworth Atheneum Museum of Art, Gift of Tony Smith, 1967.16



### Susan Morse Hilles Gallery

#### Contemporary Art

30. Sam Durant (American, born 1961) \*

*Like, Man, I'm Tired of Waiting*, 2002

Aluminum, Plexiglas, vinyl, and light bulbs

59 x 66 x 9 inches

Wadsworth Atheneum Museum of Art, The James L. Goodwin Fund, 2002.26.8

Not exhibited in over 10 years



31. Sam Durant (American, born 1961) \*

*Civil rights march, Wash., DC, 1963*, 2002

Pencil on paper

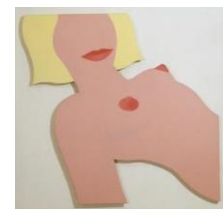
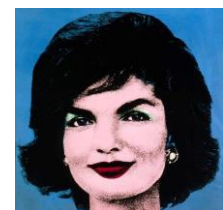
15 x 20 inches

Wadsworth Atheneum Museum of Art, The James L. Goodwin Fund, 2002.26.1

Not exhibited in over 10 years



32. Jenny Holzer (American, born 1950)  
*Untitled (from the "Survival" series)*, 1983  
 Cast aluminum  
 6 x 10 inches  
 Wadsworth Atheneum Museum of Art, National Endowment for the Arts Museum Purchase Program with matching funds bequeathed by Roscoe Nelson Gray in memory of Roscoe Nelson Dalton Gray and Rene Gabrielle Gray, 1991.21
33. Kara Walker (American, born 1969)  
*Wall Sampler 1*, 2013  
 Cut paper, on latex paint, on wall  
 144 x 144 inches, overall  
 Wadsworth Atheneum Museum of Art, The Douglas Tracy Smith and Dorothy Potter Smith Fund, 2013.23.1  
**New Acquisition – never shown before**
34. Andy Warhol (American, 1928–1987) \*  
*Triple Silver Disaster*, 1963  
 Silkscreen and enamel on canvas  
 63 1/2 x 83 1/2 inches, canvas  
 Wadsworth Atheneum Museum of Art, The Ella Gallup Sumner and Mary Catlin Sumner Collection Fund, 1974.1
35. Hank Willis Thomas (American, born 1976)  
*Basketball and Chain*, 2003  
 Digital c-print photograph  
 60 x 40 inches  
 Wadsworth Atheneum Museum of Art, Gift of Jean Crutchfield and Robert Hobbs in honor of Susan Talbott, 2014.14.1  
**New Acquisition – never shown before**
36. Felix Gonzalez-Torres (American, born Cuba, 1957–1996)  
*Untitled (Perfect Lovers)*, 1987-1990  
 Two black-framed clocks  
 13 1/2 x 27 inches, overall  
 Wadsworth Atheneum Museum of Art, Gift of the Peter Norton Family Foundation, 1996.9.1a,b
37. Andy Warhol (American 1928–1987) \*  
*Early colored Jackie*, 1964  
 Synthetic polymer paint on canvas  
 40 x 40 inches, canvas  
 Wadsworth Atheneum Museum of Art, The Ella Gallup Sumner and Mary Catlin Sumner Fund, The Douglas Tracy Smith and Dorothy Potter Fund, The James L. Goodwin Fund, The Gift of Henry and Walter Keney and the Gift of The Andy Warhol Foundation for the Visual Arts, 1994.17.1
38. Tom Wesselmann (American, 1931–2004)  
*Great American Nude #69*, 1965  
 Oil on canvas  
 64 3/8 x 55 1/8 inches  
 Wadsworth Atheneum Museum of Art, Gift of Susan Morse Hilles, 1974.3



39. Robert Rauschenberg (American, 1925–2008)  
 Retroactive I, 1964  
 Oil on canvas  
 84 x 60 inches, canvas  
 Wadsworth Atheneum Museum of Art, Gift of Susan Morse Hilles, 1964.30



40. Richard Artschwager (American, 1923–2013) \*  
 Exclamation Point, 1980  
 Wood and Paint  
 29 x 6 1/2 x 6 1/2 inches  
 Wadsworth Atheneum Museum of Art, The Ella Gallup Sumner and Mary Catlin Sumner Collection Fund, 1991.20



41. Duane Hanson (American, 1925–1996) \*  
 Sunbather, 1971  
 Mixed media  
 71 inches long  
 Wadsworth Atheneum Museum of Art, National Endowment for the Arts Purchase Program with matching funds bequeathed by Roscoe Nelson Gray in memory of Rene Gabrielle Gray and Roscoe Nelson Dalton Gray, 1977.7



42. Alex Katz (American, born 1927)  
 Margie, 1971  
 Oil on aluminum  
 62 x 17 1/2 x 5 inches  
 Wadsworth Atheneum Museum of Art, The Ella Gallup Sumner and Mary Catlin Sumner Collection Fund, 1970.122



43. Carl Andre (American, born 1935)  
 The Mazes and Snares of Minimalism, 1993  
 Painted wood  
 35 x 120 x 70 inches overall  
 Wadsworth Atheneum Museum of Art, Gift of L. Julian Pretto, 1996.12.3  
 Not exhibited in nearly 20 years



44. Robert Ryman (American, born 1930)  
 Winsor, 1966  
 Oil on canvas  
 72 x 72 inches  
 Wadsworth Atheneum Museum of Art, Gift of Donald Droll, 1967.138



45. Richard Tuttle (American, born 1941)  
 Formal Narration, 1973/2013  
 Wood, paint  
 3 1/2 x 206 x 29 3/4 inches, overall, installed  
 Wadsworth Atheneum Museum of Art, Gift of the artist, in the name of Trinity College Class of 1963, 2013.25.1a-r



46. Martin Puryear (American, born 1941)  
 Kiruna, 1982  
 Paint and gesso on pine  
 56 3/4 x 59 1/2 x 2 1/4 inches overall  
 Wadsworth Atheneum Museum of Art, The Douglas Tracy Smith and Dorothy Potter Smith Fund, The African American Art Purchase Fund, and the Alexander A. Goldfarb Contemporary Art Acquisition Fund, 2009.3.1



47. Mark di Suvero (Born China, 1933)

*For Giacometti*, 1962

44 x 72 x 36 inches

Wood and steel

Wadsworth Atheneum Museum of Art, Anonymous Gift, 1962.278

Not exhibited in over 30 years



48. George Segal (American, 1924–2000)

*Man In Doorway*, 1992

Mixed media

98 3/4 x 144 x 80 inches

Wadsworth Atheneum Museum of Art, Gift of The George and Helen Segal Foundation, 2013.12.1

New Acquisition – never shown before



49. Cindy Sherman (American, born 1954) \*

*Untitled #112*, 1982

Color-coupler print

45 1/4 x 30 inches

Wadsworth Atheneum Museum of Art, Gift of Henry and Walter Keney, 1986.13



50. Douglas Gordon (Scottish, born 1966)

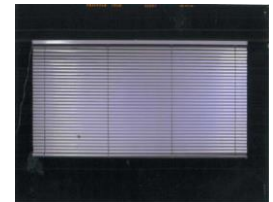
*Untitled (Blind)*, 1998

Aluminum Venetian blind with motor

126 x 42 1/2 inches (dimensions variable)

Wadsworth Atheneum Museum of Art, Gift of Christophe and Anne-Gaelle Van de Weghe, 2014.3.1A,B

New Acquisition – never shown before



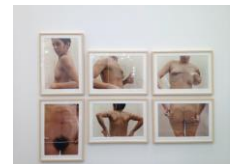
51. Ana Mendieta (American, born Cuba, 1948–1985)

*Untitled (Glass on Body Imprints)*, 1972

30 1/4 x 104 5/8 inches, frame

Color photographs

Wadsworth Atheneum Museum of Art, Contemporary Art Purchase Fund, 1998.12.2



52. Kiki Smith (American, born Germany, 1954)

*Daisy Chain*, 1992

Steel, bronze

Length: 100 inches

Wadsworth Atheneum Museum of Art, The Douglas Tracy Smith and Dorothy Potter Smith Fund, 2012.6.1



53. Lorna Simpson (American, born 1960) \*

*Bits and Pieces*, 1989

Silver prints with plastic plaques

77 1/2 x 44 1/2 inches overall

Wadsworth Atheneum Museum of Art, Purchased through a gift of H. Hilliard Smith, 1989.20

Not exhibited in nearly 20 years



54. Mark Manders (Dutch, born 1968)

*Composition with Yellow Vertical*, 2010

Wood, painted epoxy, iron, and necklace

19 x 24 x 11 1/2 inches, overall

Wadsworth Atheneum Museum of Art, Purchased through the gift of James Junius Goodwin, 2011.1.1



55. Bob Thompson (American, 1937–1966) \*

*Garden of Music*, 1960

Oil on canvas

78 7/8 x 143 1/2 inches

Wadsworth Atheneum Museum of Art, The Ella Gallup Sumner and Mary Catlin Sumner Collection Fund, 1987.4



56. Nick Cave (American, born 1959)

*Soundsuit*, 2009

Mixed media

96 x 26 x 20 inches

Wadsworth Atheneum Museum of Art, African American Art Purchase Fund, 2009.6.



57. Vanessa German (American, born 1976)

*Tar Baby on Pig with "N,"* 2011

Tar, found objects, nails, spark plugs, fabric, silver bird, hand wrought beads, porcelain figure, beads, old jewelry, and cloth

28 x 12 x 10 inches overall

Wadsworth Atheneum Museum of Art, 2014.10.13

**New Acquisition – never shown before**



58. Pepón Osorio (American, born Puerto Rico, 1955)

*En la barbería, no se llora (No crying allowed in the barber shop)*, 1994

Mixed media

63 x 60 x 60 inches overall

Wadsworth Atheneum Museum of Art, Purchased through a gift from Southern New England Telephone in recognition of the vitality of Connecticut's Puerto Rican community, and through the Alexander A. Goldfarb Contemporary Art Acquisition Fund, 1994.37.1

**Not exhibited in nearly 20 years**



59. Dawoud Bey (American, born 1953) \*

*Keisha*, 1996

Polacolor ER Prints

60 3/4 x 45 3/4 inches, overall

Wadsworth Atheneum Museum of Art, Purchased through the Gift of James Junius Goodwin and The Alexander A. Goldfarb Contemporary Art Acquisition Fund, 1997.5.1



60. Ahmed Alsoudani (American, born Iraq, 1975) \*

*Untitled*, 2012

Acrylic and charcoal on canvas

92 x 80 inches

Wadsworth Atheneum Museum of Art, The Ella Gallup Sumner and Mary Catlin Sumner Collection Fund, 2012.21.1



61. Charles LeDray (American, born 1960)

*Untitled/Tower*, 2001

Human bone and paper

18 1/8 x 9 x 4 7/8 inches, overall

The Cartin Collection. Partial and Promised Gift to the Wadsworth Atheneum Museum of Art, Hartford, Connecticut, 2001.16.1A-E





62. Romare Bearden (American, 1911–1988) \*

*She-ba*, 1970

Collage on paper, cloth and synthetic polymer paint on composition board

48 x 35 7/8 inches

Wadsworth Atheneum Museum of Art, The Ella Gallup Sumner and Mary Catlin Sumner Collection Fund, 1971.12



63. Romuald Hazoumè (Beninese, born 1962)

*Agbota*, 2011

Plastic and steel

11 1/16 x 15 3/4 x 6 3/4 inches

Wadsworth Atheneum Museum of Art, The Goodwin Art Purchase Fund, 2014.5.1

New Acquisition – never shown before



## Video Space

64. James Nares (American, born England, 1953)

*STREET*, 2012

High definition video with sound

Running time: 61 minutes

Wadsworth Atheneum Museum of Art, Purchased through the gift of Charles A. Goodwin, 2012.14.1



## Second Floor Colt Mezzanine

65. Sol LeWitt (American, 1928–2007) \*

*Hanging Structure*, 1987

Wood and paint

110 x 24 1/2 x 24 1/2 inches

Wadsworth Atheneum Museum of Art, Gift of Coosje Van Bruggen and Claes Oldenburg, 2004.5.1a-b



66. Sol LeWitt (American, 1928–2007) \*

*Incomplete Open Cube 6/19*, 1974

Painted aluminum

40 x 40 x 40 inches

Wadsworth Atheneum Museum of Art, The Douglas Tracy Smith and Dorothy Potter Smith Fund, and partial gift of Carol and Sol LeWitt, 2001.8.206



67. Sol LeWitt (American, 1928–2007) \*

*Complex Form*, 1988

Painted wood

48 x 47 1/4 x 47 1/4 inches

Wadsworth Atheneum Museum of Art, Gift of Sol and Carol LeWitt given in memory of Nellie and Bella LeWitt, 1989.22



68. Tara Donovan (American, born 1969)

*Untitled (Toothpicks)*, 2009

Wood

46 x 46 x 46 inches

Wadsworth Atheneum Museum of Art, Purchased through the gift of James Junius Goodwin, 2009.10.1



69. Sol LeWitt (American, 1928–2007) \*

*Wall Drawing #352.*, 1980

Acrylic and crayon on wall surface

Wadsworth Atheneum Museum of Art, The Ella Gallup Sumner and Mary Catlin Sumner Collection Fund, 1981.4

Not exhibited in over 15 years



### Rotunda

70. Christian Marclay (Swiss and American, born 1955)

*Telephones*

Videotape transferred to DVD

Running time: 7:30 minutes

Wadsworth Atheneum Museum of Art, The Douglas Tracy Smith and Dorothy Potter Smith Fund, 2014.2.1

New Acquisition – never shown before



\* denotes MATRIX artist