

Peter Blume: Nature and Metamorphosis
July 3 – Sept. 20, 2015
Exhibition Checklist

1. Peter Blume
Self Portrait, 1924
Pencil on paper
19 x 15 inches, framed
Museum purchase and the Benjamin V. and Jane M. Siegel Fund,
2013.40.1



2. Peter Blume
Maine Coast, 1926
Oil on canvas
47 7/8 x 39 x 3 inches, framed
Curtis Galleries, Minneapolis, MN



3. Peter Blume
New England Barn, 1926
Oil on canvas
31 x 43 1/4 inches, framed
Whitney Museum of American Art,
Gift of Leonard Spigelgass, 61.14



4. Peter Blume
Pig's Feet and Vinegar, 1927
Oil on canvas
26 5/16 x 30 1/2 x 1 5/8 inches, framed
The Jewish Museum, New York, Purchase: Gift of David Kluger, by
exchange; Miriam and Milton Handler Fund; Charlotte Levitte Fund
in memory of Julius Nassau; Hanni and Peter Kaufmann, Gladys and
Selig Burrows, Hyman L. and Joan C. Sall, and John Steinhardt and
Susan Margules Steinhardt Gifts, 1994-632



5. Peter Blume
Torso with Tiger Lily, 1927
Oil on canvas
28 3/4 x 24 1/2 x 3 inches, framed
Collection of Barney A. Ebsworth



6. Peter Blume
Vegetable Dinner, 1927
Oil on canvas
33 x 37 1/2 inches, framed
Smithsonian American Art Museum, Washington, D.C.



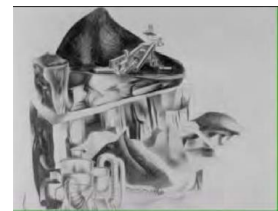
7. Peter Blume
Study for Parade (Waterfront, Manhattan), 1929
Gouache on board
29 x 23 inches, framed
The Museum of Modern Art, New York,
Gift of Abby Aldrich Rockefeller, 1935



8. Peter Blume
Parade, 1929-30
Oil on canvas
53 1/2 x 61 inches, framed
The Museum of Modern Art, New York,
Gift of Abby Aldrich Rockefeller, 1935



9. Peter Blume
Coal Breaker, Scranton, 1930
Graphite on paper
17 x 22 3/4 inches, framed
The Metropolitan Museum of Art, New York,
Rogers Fund, 1953 (53.26)



10. Peter Blume
Study for South of Scranton, 1930
Oil on canvas
33 3/4 x 25 3/4 inches, framed
Private collection



11. Peter Blume
South of Scranton, 1930-31
Oil on canvas
56 x 66 inches, framed
The Metropolitan Museum of Art, New York,
George A. Hearn Fund, 1942 (42.155)



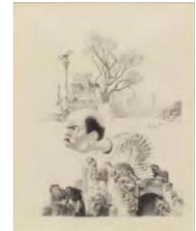
12. Peter Blume
The Eternal City, 1934-37
Oil on composition board
45 x 59 inches, framed
The Museum of Modern Art, New York,
Mrs. Simon Guggenheim Fund, 1942



13. Peter Blume
Elemosina (Study for The Eternal City), 1933
Pencil on paper
23 x 16 3/4 inches, framed
The Museum of Modern Art, New York,
Gift of Abby Aldrich Rockefeller



14. Peter Blume
Jack-in-the-Box (Study for The Eternal City), 1933
Pencil on paper
23 x 16 3/4 inches, framed
The Museum of Modern Art, New York,
Mrs. Simon Guggenheim Fund, 1942



15. Peter Blume
Beggar Woman (Study for The Eternal City), 1933
Pencil on paper
23 x 16 3/4 inches, framed
The Museum of Modern Art, New York,
Gift of Edgar Kaufmann, Jr., 1954



16. Peter Blume
Insurrection (Study for The Eternal City), 1934
Pencil on paper
17 x 22 1/2 inches, framed
The Museum of Modern Art, New York,
Mrs. Simon Guggenheim Fund, 1942



17. Peter Blume
Sherman Church, 1934
Graphite on paper
22 3/4 x 17 inches, framed
The Metropolitan Museum of Art, New York,
Lent permanently by the United States Government, 1934



18. Peter Blume
Monk (Study for The Eternal City), 1937
Oil on paper
17 1/2 x 16 1/2 inches, framed
The Museum of Modern Art, New York,
Given anonymously, 1945



19. Peter Blume
Self Portrait, 1937
Pencil on paper
25 x 19 inches, framed
Benjamin V. and Jane M. Siegel Fund, 2013.40.2



20. Peter Blume

Beatty's Barn (Study for mural, Canonsburg, Pennsylvania Post Office), 1937

Watercolor and pencil on paper

21 x 37 1/2 inches, framed

Smithsonian American Art Museum, Washington, D.C. Transfer from the U.S. Department of the Interior, National Park Service



21. Peter Blume

Landscape with Poppies, 1939

Oil on canvas

24 x 30 1/2 inches, framed

The Museum of Modern Art, New York, Gift of Abby Aldrich Rockefeller, 1941



22. Peter Blume

Key West Beach, 1940

Oil on canvas

21 1/2 x 27 inches, framed

The Museum of Modern Art, New York, James Thrall Soby Bequest, 1979



23. Peter Blume

Study for Key West Beach, 1940

Conté crayon and pencil on paper

13 x 15 3/4 inches, framed

The Museum of Modern Art, New York, James Thrall Soby Bequest, 1980



24. Peter Blume

Sponge, 1942

Pencil on paper

14 1/2 x 18 inches, framed

The Museum of Modern Art, New York, Kay Sage Tanguy Bequest, 1963



25. Peter Blume

Kilns, 1946

Tempera emulsion on paper, pasted on cardboard

17 x 22 3/4 inches, framed

The Metropolitan Museum of Art, New York, George A. Hearn Fund, 1948 (48.34)



26. Peter Blume

Man of Sorrows, 1951

Tempera on canvas

35 x 31 inches, framed

Whitney Museum of American Art, New York, Purchase, 51.5



27. Peter Blume

The Italian Straw Hat, 1952

Oil on paper on board

29 1/8 x 37 1/4 x 2 inches, framed

Wadsworth Atheneum Museum of Art, Hartford, CT

The Schnakenberg Fund, 1955.32



28. Peter Blume

Sketch for "The Italian Straw Hat," c. 1952

Oil paint and black ink over graphite on wove paper

7 5/8 x 9 1/4 inches

Gift of Peter Blume, 1956.482



29. Peter Blume

Sketch for "The Italian Straw Hat," 1952

Pencil on paper

11 7/8 x 8 3/8 inches

Gift of Peter Blume, 1956.481



30. Peter Blume

Sketch for "The Italian Straw Hat," 1952

Crayon on paper

22 x 29 7/8 inches

Gift of Peter Blume, 1956.483



30a. Peter Blume

Easter Island and Rana Raraku, 1954

Pen and ink on mulberry paper

26 x 32 1/2 inches, framed

The Museum of Modern Art, New York,

Gift of Blanchette Hooker Rockefeller



31. Peter Blume

Hadrian's Villa, 1958

Oil on canvas

36 5/8 x 42 15/16 x 1 15/16 inches

The Cleveland Museum of Art, OH,

Gift of Mr. and Mrs. Edward Holsten, 1958.318



32. Peter Blume
Tasso's Oak, 1957-60

Oil on canvas

81 x 96 inches

Collection of Mr. and Mrs. Armand G. Erpf



33. Peter Blume

Cartoon for Tasso's Oak, 1958

Casein with black wash and charcoal on paper

60 x 80 inches

Estate of Peter Blume, courtesy of ACA Galleries, New York



34. Peter Blume

Nun Walking, study for Tasso's Oak, 1958

Gouache, pen, and ink on paper

30 1/2 x 25 1/2 inches, framed

Private collection



35. Peter Blume

Woman with Shawl, study for Tasso's Oak, 1959-67

Ink and gouache on paper

25 1/2 x 32 1/2 x 1 1/2 inches, framed

Courtesy of Philip and Catherine Korsant



36. Peter Blume

Group of People, study for Tasso's Oak, 1958

Pencil on paper

20 x 17 inches, framed

Estate of Peter Blume, courtesy of ACA Galleries, New York



37. Peter Blume

Study for Tasso's Oak, 1957

Ink on paper

4 1/2 x 5 1/2 inches

Estate of Peter Blume, courtesy of ACA Galleries, New York



38. Peter Blume

Banyan Tree, 1961

Oil on canvas

35 x 43 inches, framed

Smithsonian American Art Museum, Washington, D.C.



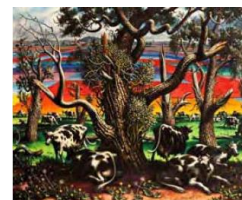
38a. Peter Blume

Summer, 1964-66

Oil on canvas

62 x 80 inches

Collection of Lawrence B. Benenson



39. Peter Blume
Winter, 1964
 Oil on canvas
 57 1/2 x 69 x 3 inches, framed
 Courtesy of Eric S. Brecher



40. Peter Blume
Recollection of the Flood, 1967-69
 Oil on canvas
 57 x 63 x 4 inches, framed
 Collection of Dorothy Kobak



41. Peter Blume
Cartoon for Recollection of the Flood, 1968
 Charcoal on paper
 51 x 56 1/2 inches, framed
 The Metropolitan Museum of Art, New York,
 George A. Hearn Fund, 1996 (1996.376)



42. Peter Blume
Study for Recollection of the Flood, 1967
 Gouache on paper
 16 1/2 x 17 x 1 inches, framed
 Philip and Catherine Korsant



43. Peter Blume
Study Number 5 for Recollection of the Flood, 1968
 Enamel on Masonite
 21 3/4 x 25 1/2 inches, framed
 The Metropolitan Museum of Art, New York,
 George A. Hearn Fund, 1996 (1996.340)



44. Peter Blume
Harps, 1932
 Pencil on paper
 21 1/2 x 20 inches, framed
 The Museum of Modern Art, New York,
 Gift of Aldrich Rockefeller, 1935



45. Peter Blume
Museum, 1932
 Pencil on paper
 22 3/4 x 16 3/4 inches, framed
 The Museum of Modern Art, New York,
 Gift of Abby Aldrich Rockefeller, 1935



46. Peter Blume

Obelisk, 1932

Pencil on paper

23 x 19 1/4 inches, framed

The Museum of Modern Art, New York,

Gift of Abby Aldrich Rockefeller, 1935

