

Peter Blume: Nature and Metamorphosis
July 3, 2015–Sept. 20, 2015
Publicity Images and Captions

The following images are available for print and digital publicity of *Peter Blume: Nature and Metamorphosis*. Images must be accompanied by captions. For files and permission contact media@wadsworthatheneum.org.



1.



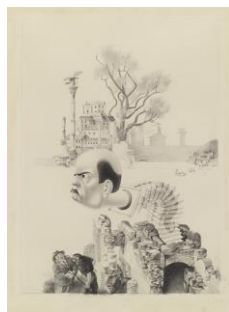
2.



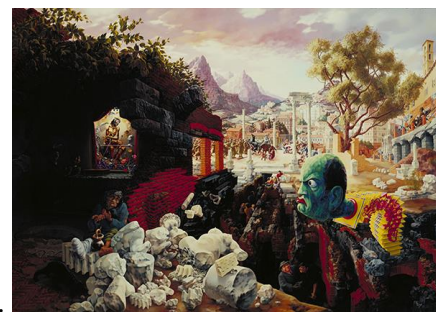
3.



4.



5.



6.

1. Peter Blume, *Self Portrait*, 1924, pencil on paper, 10 3/4 x 8 3/4 inches, Pennsylvania Academy of the Fine Arts, Philadelphia, Museum Purchase and the Benjamin V. and Jane M. Siegel Fund, 2013.40.1, Art © The Educational Alliance, Inc./Estate of Peter Blume/Licensed by VAGA, New York

2. Peter Blume, *Torso with Tiger Lily*, 1927, oil on canvas, 20 1/4 x 16 3/8 inches, Collection of Barney A. Ebsworth Art © The Educational Alliance, Inc./Estate of Peter Blume/Licensed by VAGA, New York

3. Peter Blume, *Parade*, 1929-30, oil on canvas, 49 1/4 x 56 3/8 inches, The Museum of Modern Art, New York. Gift of Abby Aldrich Rockefeller, 1935, Art © The Educational Alliance, Inc./Estate of Peter Blume/Licensed by VAGA, New York

Wadsworth Atheneum Museum of Art
Publicity Images, *Peter Blume: Nature and Metamorphosis*
5-27-15/ay

4. Peter Blume, *South of Scranton*, 1930-31, oil on canvas, 56 x 66 inches, The Metropolitan Museum of Art, New York, George A. Hearn Fund, 1942 (42.155), Art © The Educational Alliance, Inc./Estate of Peter Blume/Licensed by VAGA, New York

5. Peter Blume, *Jack-in-the-Box (Study for The Eternal City)*, 1933, pencil on paper, 14 x 9 3/4 inches, The Museum of Modern Art, New York, Mrs. Simon Guggenheim Fund, 1942 Art © The Educational Alliance, Inc./Estate of Peter Blume/Licensed by VAGA, New York

6. Peter Blume, *The Eternal City*, 1934-37, oil on composition board, 34 x 47 7/8 inches, The Museum of Modern Art, New York, Mrs. Simon Guggenheim Fund, 1942, Art © The Educational Alliance, Inc./Estate of Peter Blume/Licensed by VAGA, New York



7.



8.



9.



10.



11.



12.

7. Peter Blume, *Landscape with Poppies*, 1939, oil on canvas, 18 x 25 1/8 inches, The Museum of Modern Art, New York, Gift of Abby Aldrich Rockefeller, 1941, Art © The Educational Alliance, Inc./Estate of Peter Blume/Licensed by VAGA, New York

8. Peter Blume, *The Italian Straw Hat*, 1952, oil on paper on board, 22 1/4 x 30 3/8 inches, Wadsworth Atheneum Museum of Art, Hartford, CT, The Schnakenberg Fund, 1955.32, Art © The Educational Alliance, Inc./Estate of Peter Blume/Licensed by VAGA, New York

9. Peter Blume, *Tasso's Oak*, 1957-60, oil on canvas, 81 x 96 inches, Collection of Mr. and Mrs. Armand G. Erpf Art © The Educational Alliance, Inc./Estate of Peter Blume/Licensed by VAGA, New York

10. Peter Blume, *Winter*, 1964, oil on canvas, 48 x 60 inches, Courtesy of Eric S. Brecher, Art © Estate of Peter Blume/Licensed by VAGA, New York

11. Peter Blume, *Summer*, 1964-66, oil on canvas, 62 x 80 inches, Collection of Lawrence B. Benenson, Art © The Educational Alliance, Inc./Estate of Peter Blume/Licensed by VAGA, New York

12. Peter Blume, *Recollection of the Flood*, 1967-69, oil on canvas, 48 x 54 inches, Collection of Dorothy Kobak Art © The Educational Alliance, Inc./Estate of Peter Blume/Licensed by VAGA, New York