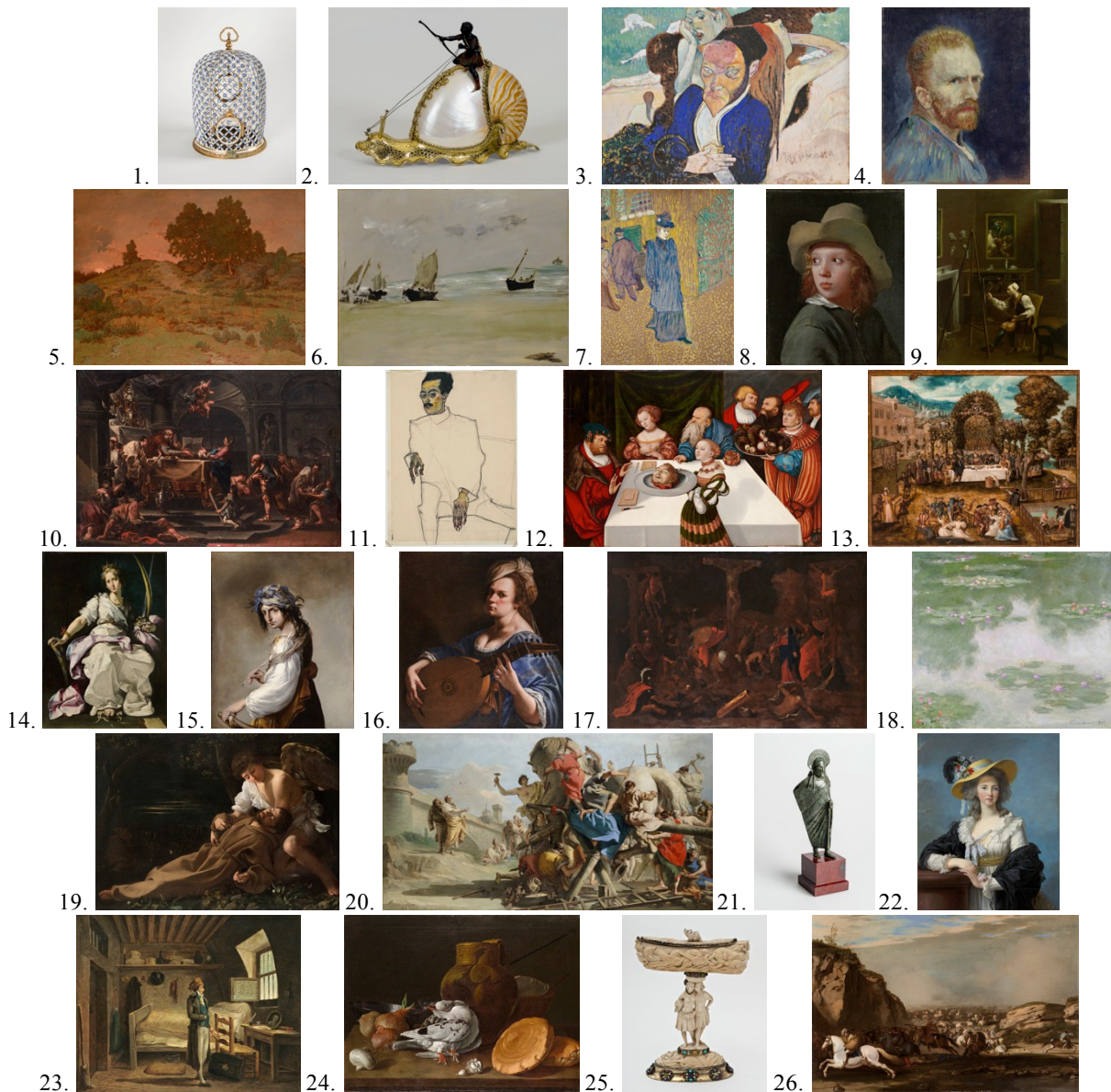
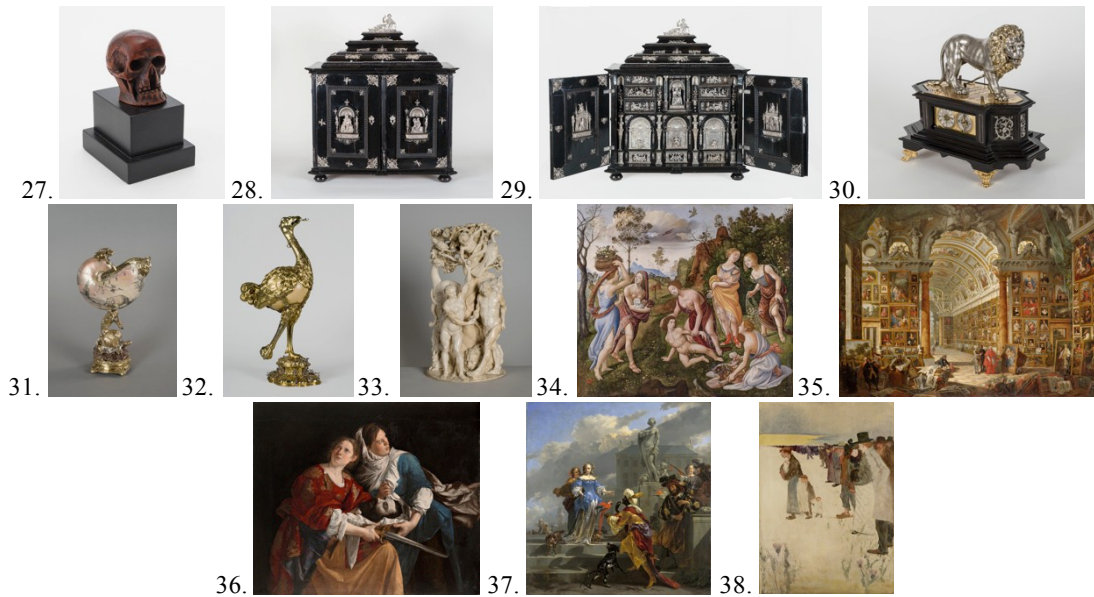


European Art
Publicity Images and Captions

The following images are available for print and digital publicity of the Wadsworth Atheneum Museum of Art's European Art Reinstallation. Images must be accompanied by captions. For files and permission contact media@wadsworthatheneum.org.





1. Meissen Manufactory, German, Meissen, *Bird Cage*, 1740-50, Hard-paste porcelain, and gilt bronze, Wadsworth Atheneum Museum of Art, Gift of J. Pierpont Morgan, 1917.1247

2. Jeremias Ritter, *Nautilus snail*, c. 1630, Silver-gilt and shell, Wadsworth Atheneum Museum of Art, Gift of J. Pierpont Morgan, 1917.260

3. Paul Gauguin, *Nirvana: Portrait of Meyer de Haan*, c. 1889-1890, Gouache and bronze paint on cotton, Wadsworth Atheneum Museum of Art, The Ella Gallup Sumner and Mary Catlin Sumner Collection Fund, 1943.445

4. Vincent Van Gogh, *Self Portrait*, c. 1887, Oil on canvas, Wadsworth Atheneum Museum of Art, Gift of Philip L. Goodwin in memory of his mother, Josephine S. Goodwin, 1954.189

5. Théodore Rousseau, *Sunset on the Sand Dunes of Jean-de-Paris*, c. 1864-67, Oil on canvas, Wadsworth Atheneum Museum of Art, Gift in honor of Helene and Mark Eisner, by exchange, 2005.31.1

6. Édouard Manet, *The Beach at Berck*, 1873, Oil on canvas, Wadsworth Atheneum Museum of Art, The Ella Gallup Sumner and Mary Catlin Sumner Collection Fund, 1967.1

7. Henri de Toulouse-Lautrec, *Jane Avril Leaving the Moulin Rouge*, 1892, Wadsworth Atheneum Museum of Art, Bequest of George A. Gay, 1941.163

8. Michael Sweerts, *Boy with a Hat*, c. 1655, Oil on canvas, Wadsworth Atheneum Museum of Art, The Ella Gallup Sumner and Mary Catlin Sumner Collection Fund, 1940.198

9. Giuseppe Maria Crespi, *An Artist in his Studio*, 1730s, Oil on canvas, Wadsworth Atheneum Museum of Art, The Ella Gallup Sumner and Mary Catlin Sumner Collection Fund, 1936.499

10. Alessandro Magnasco, *Presentation in the Temple*, Oil on canvas, Wadsworth Atheneum Museum of Art, The Ella Gallup Sumner and Mary Catlin Sumner Collection Fund, 1937.471
11. Egon Schiele, *Portrait of Doctor X*, 1910, Black pastel and watercolor on paper, Wadsworth Atheneum Museum of Art, The Ella Gallup Sumner and Mary Catlin Sumner Collection Fund, 1967.69
12. Lucas Cranach the Elder, *The Feast of Herod*, 1531, Oil on panel, Wadsworth Atheneum Museum of Art, The Ella Gallup Sumner and Mary Catlin Sumner Collection Fund, 1936.339
13. Hans Mielich, *Outdoor Banquet*, 1548, Oil on panel, Wadsworth Atheneum Museum of Art, The Ella Gallup Sumner and Mary Catlin Sumner Collection Fund, 1949.199
14. Bernardo Strozzi, *Saint Catherine of Alexandria*, c. 1615, Oil on canvas, Wadsworth Atheneum Museum of Art, The Ella Gallup Sumner and Mary Catlin Sumner Collection Fund. Endowed in memory of A. Everett Austin, Jr. by Mrs. A. Everett Austin, Jr., 1931.99
15. Salvator Rosam, *Lucrezia as Poetry*, c. 1641, Oil on canvas, Wadsworth Atheneum Museum of Art, The Ella Gallup Sumner and Mary Catlin Sumner Collection Fund, 1956.159
16. Artemisia Gentileschi, *Self-Portrait as a Lute Player*, c. 1615-18, Oil on canvas, Wadsworth Atheneum Museum of Art, Charles H. Schwartz Endowment Fund, 2014.4.1
17. Nicolas Poussin, *The Crucifixion*, 1644-46, Oil on canvas, Wadsworth Atheneum Museum of Art, The Ella Gallup Sumner and Mary Catlin Sumner Collection Fund, 1935.422
18. Claude Monet, *Nymphéas (Water Lilies)*, 1907, Oil on canvas, Wadsworth Atheneum Museum of Art, Bequest of Anne Parrish Titzell, 1957.622
19. Caravaggio (Michelangelo Merisi), *Saint Francis of Assisi in Ecstasy*, c. 1595-96, Oil on canvas, Wadsworth Atheneum Museum of Art, The Ella Gallup Sumner and Mary Catlin Sumner Collection Fund, 1943.222
20. Giovanni Domenico Tiepolo, *The Building of the Trojan Horse*, c. 1773-74, Oil on canvas, Wadsworth Atheneum Museum of Art, The Ella Gallup Sumner and Mary Catlin Sumner Collection Fund, 1950.658
21. Greek, *Draped Warrior*, 510-500 BCE, Bronze, Wadsworth Atheneum Museum of Art, Gift of J. Pierpont Morgan, 1917.815
22. Elisabeth Louise Vigée-LeBrun, *The Duchesse de Polignac Wearing a Straw Hat*, 1782, Oil on canvas, Wadsworth Atheneum Museum of Art, The Ella Gallup Sumner and Mary Catlin Sumner Collection Fund. Acquired in Honor of Kate M. Sellers, Eighth Director of the Wadsworth Atheneum, 2000-2003, 2002.13.1

23. Hubert Robert, *Jean-Antoine Roucher in Prison*, c. 1797, Oil on canvas, Wadsworth Atheneum Museum of Art, The Ella Gallup Sumner and Mary Catlin Sumner Collection Fund, 1937.1
24. Luis Egidio Meléndez, *Still Life with Pigeons, Onions, Bread, and Kitchen Utensils*, c. 1772, Oil on canvas, Wadsworth Atheneum Museum of Art, The Ella Gallup Sumner and Mary Catlin Sumner Collection Fund, 1938.256
25. Georg Pfründt, *Covered Cup*, 1670-74, Ivory, narwhal, silver-gilt, precious and semi-precious stones, Wadsworth Atheneum Museum of Art, Gift in memory of Mae Cadwell Rovensky by exchange, The Anna Rosalie Mansfield Gift by exchange, Gift of Miss Mary C. Barton by exchange, The European Decorative Arts Purchase Fund, and the Douglas Tracy Smith & Dorothy Potter Smith Fund, 2012.4.1
26. Aniello Falcone, *Cavalry Battle between Turks and Christians*, Oil on canvas, Wadsworth Atheneum Museum of Art, The Ella Gallup Sumner and Mary Catlin Sumner Collection Fund, and the European Paintings and Sculpture Purchase Fund, 2015.7.1
27. German, *Memento Mori Head*, 17th century, Plum tree wood, Wadsworth Atheneum Museum of Art, The Evelyn Bonar Storrs Trust Fund, 2015.10.1
28. Followers of Christopher Jamnitzer, *Cabinet and Key* (closed), c. 1620, Ebony, silver, and rock crystal, Wadsworth Atheneum Museum of Art, Gift of J. Pierpont Morgan, 1917.247
29. Followers of Christopher Jamnitzer, *Cabinet and Key* (open), c. 1620, Ebony, silver, and rock crystal, Wadsworth Atheneum Museum of Art, Gift of J. Pierpont Morgan, 1917.247
30. German, *Clock in form of a lion*, 16th-17th century, Ebony and brass, Wadsworth Atheneum Museum of Art, Gift of J. Pierpont Morgan, 1917.254
31. George Mond, *Nautilus Cup*, c. 1620, Nautilus shell, amethyst crystals, silver-gilt, Wadsworth Atheneum Museum of Art, Gift of J. Pierpont Morgan, 1917.269
32. Johannes Clauss, *Ostrich-Egg Cup*, 17th century, Silver-gilt and shell, Wadsworth Atheneum Museum of Art, Gift of J. Pierpont Morgan, 1917.272
33. Workshop of Master of the St. Sebastian's Martyrdoms, *The Fall of Man*, c. 1630-1650, Ivory on wood base, Wadsworth Atheneum Museum of Art, Gift of J. Pierpont Morgan, 1917.303
34. Piero di Cosimo, *The Finding of Vulcan on the Island of Lemnos*, c. 1490, Oil and tempera on canvas, Wadsworth Atheneum Museum of Art, The Ella Gallup Sumner and Mary Catlin Sumner Collection Fund, 1932.1

35. Giovanni Paolo Panini, *The Picture Gallery of Cardinal Silvio Valenti Gonzaga*, 1749, Oil on canvas, Wadsworth Atheneum Museum of Art, The Ella Gallup Sumner and Mary Catlin Sumner Collection Fund, 1948.478

36. Orazio Gentileschi, *Judith and Her Maidservant with the Head of Holofernes*, c. 1610-12, Oil on canvas, Wadsworth Atheneum Museum of Art, The Ella Gallup Sumner and Mary Catlin Sumner Collection Fund, 1949.52

37. Nicolaes Berchem, *A Moor Presenting a Parrot to a Lady*, c. 1660-70, Oil on canvas, Wadsworth Atheneum Museum of Art, The Ella Gallup Sumner and Mary Catlin Sumner Collection Fund, 1961.29

38. Théophile Alexandre Steinlen, *The March of the People*, c. 1900, Oil on canvas, Wadsworth Atheneum Museum of Art, The Ella Gallup Sumner and Mary Catlin Sumner Collection Fund, 1971.7